



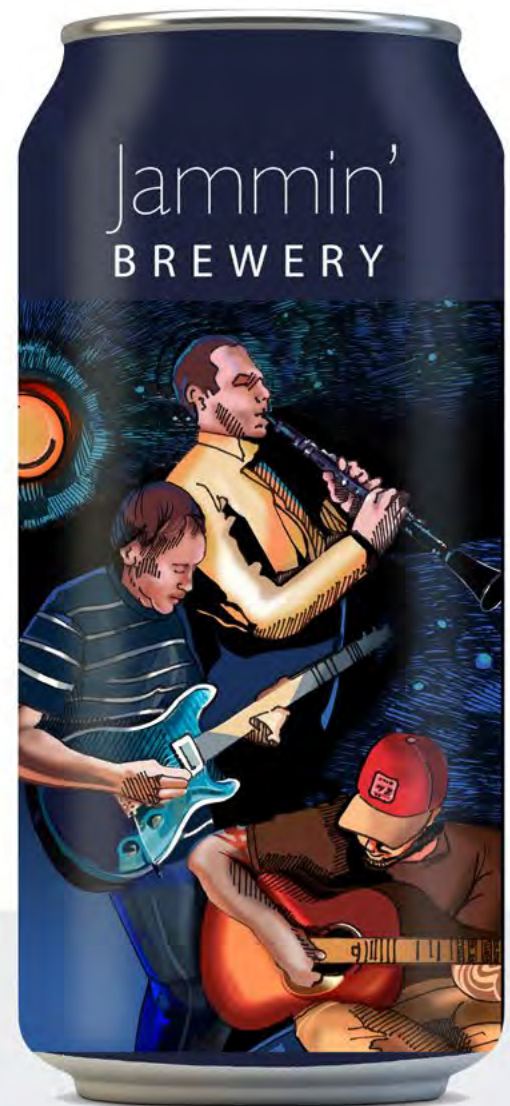
SALLY MCCARTHY

ILLUSTRATION PORTFOLIO

GRAPHIC ILLUSTRATION











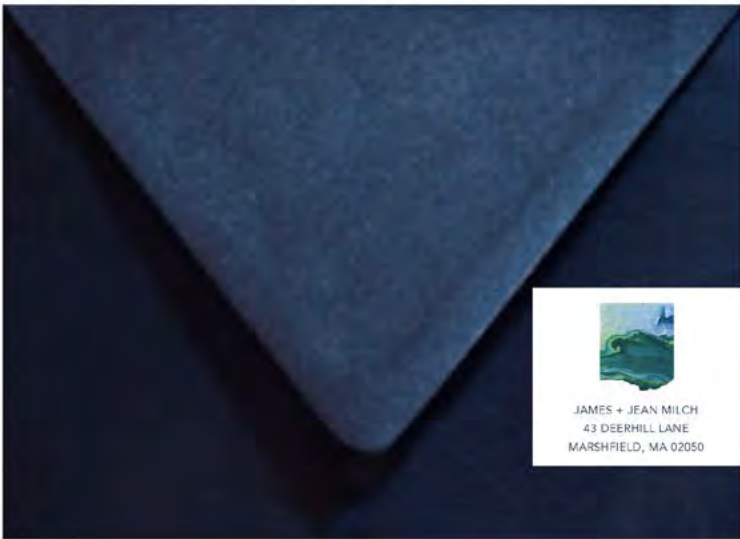




**THANK  
YOU!**



**FOR HAVING YOUR  
PAYMENT READY**



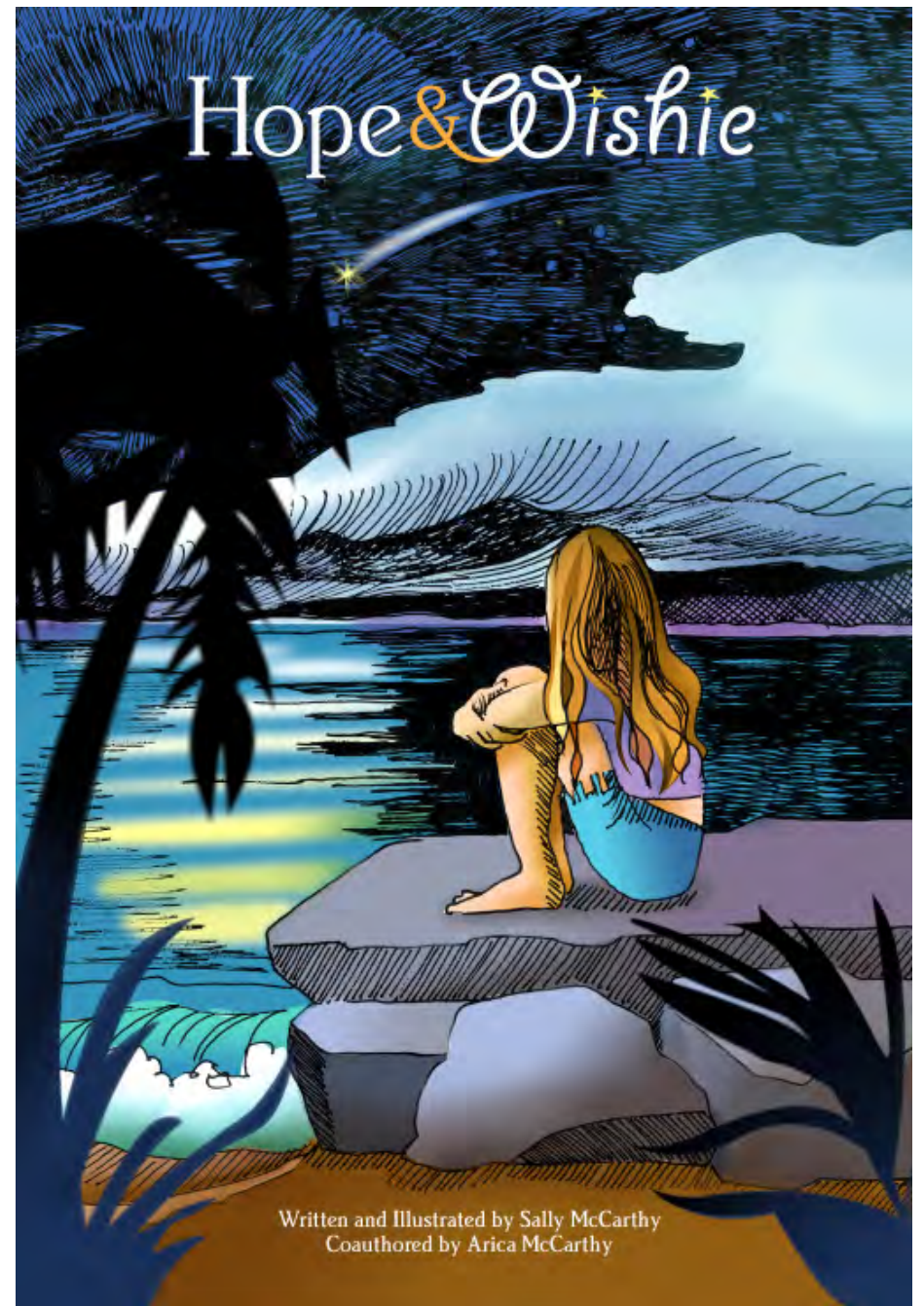


SALLY MCCARTHY

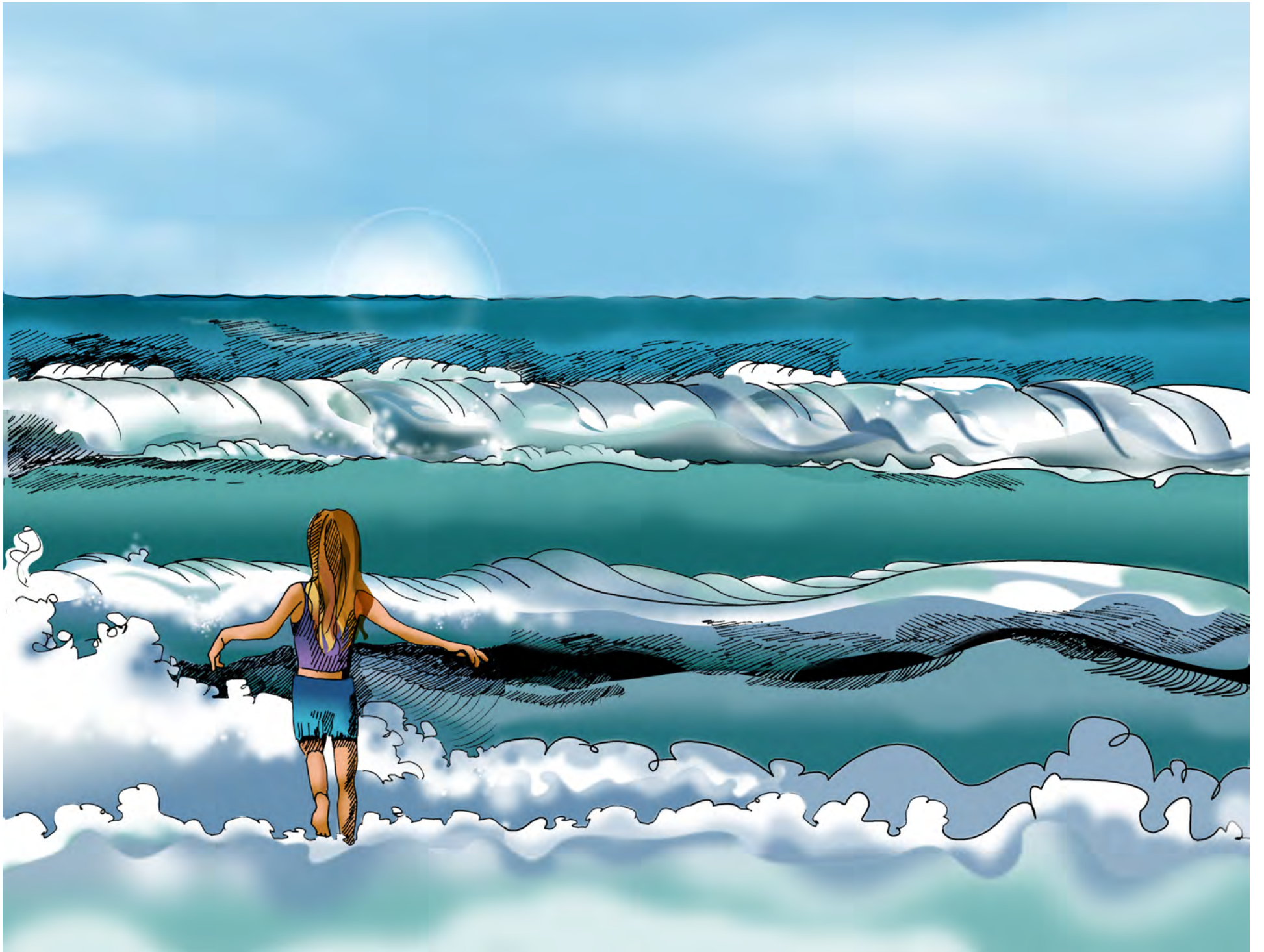
ILLUSTRATION PORTFOLIO

**CHILDREN'S BOOKS**



























SALLY MCCARTHY

ILLUSTRATION PORTFOLIO

ARCHITECTURAL ILLUSTRATIONS



WINNER: Lamplighter Award  
Wichester Hospital "Our First Century" Hard Cover Book:  
2012 | 24" x 24" | *Watercolor on paper, tip-in on hard cover*





The New Cancer Center At 620 Washington Street | 2013 | 28" x 17" | *Watercolor on paper*





Beacon Street, Boston | 12" x 9.5" | Watercolor and pen & ink on paper



